



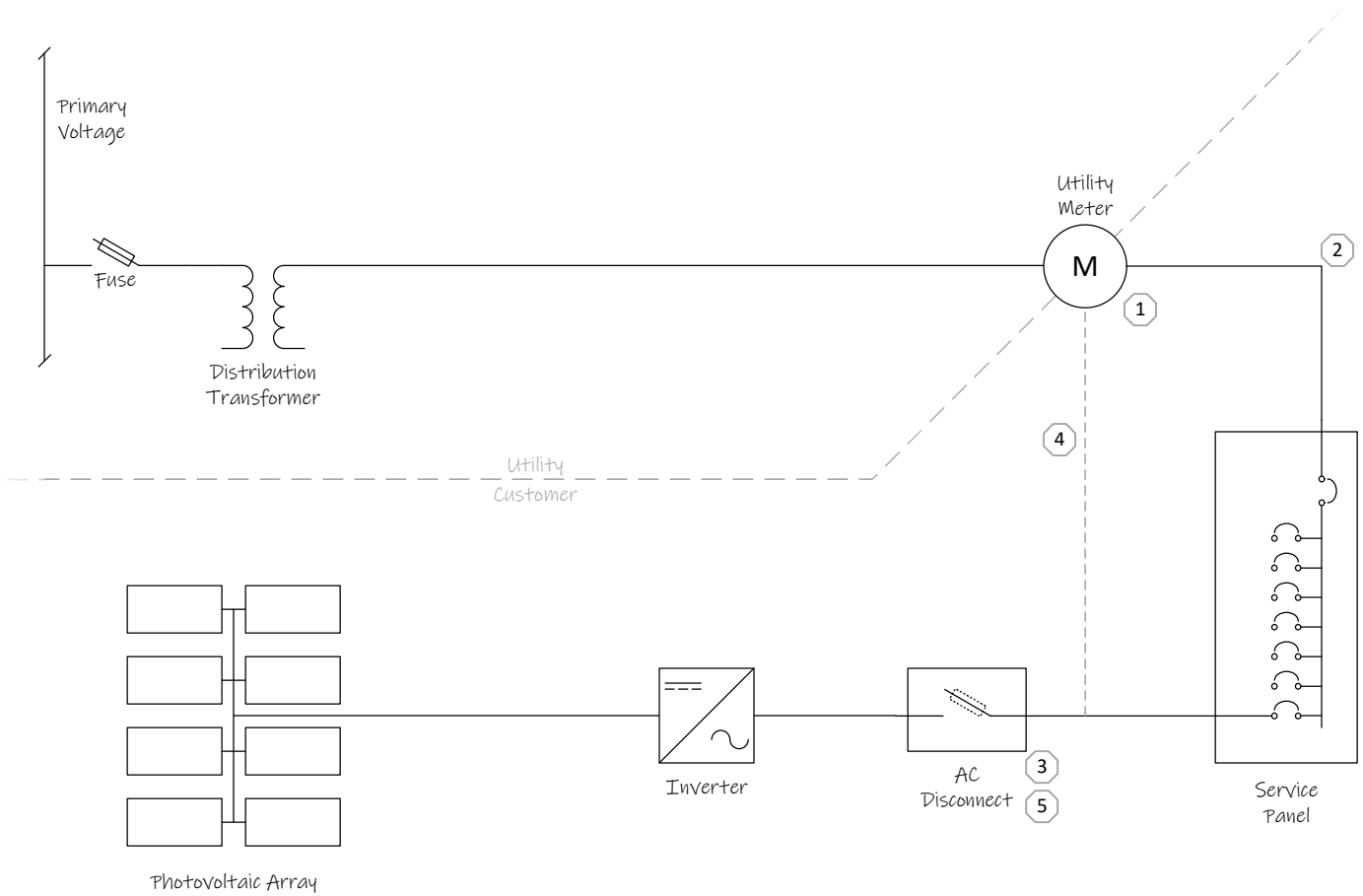
# Interconnection Specifications

CR-IC-01  
Sh 01  
20210624

## Customer-Owned Small Generation Single Line Drawing Example

### Typical Net-Metered Generation

Residential / Small Commercial SPV





## Interconnection Specifications

CR-IC-01  
Sh 02  
20210824

### Customer-Owned Small Generation Single Line Drawing Example

#### General Notes:

1. Customer/Excavator is responsible to notify the Pennsylvania One Call System between 3 and 10 days prior to any excavation. Excavation shall comply with the PA Underground Utility Line Protection Law ('UULPA'). More information is available at [www.pa1call.org](http://www.pa1call.org).
2. Customer/Installer is **not permitted** to remove meter or work within meter enclosure while energized. Service interruptions to allow for safe installation may be scheduled in advance with Company.
3. All installations shall meet or exceed NEC, in addition to all requirements of the Company.

#### Drawing Notes:

- 1 Connections in meter enclosure are limited to factory installed (or manufacturer approved after-market) double connectors. Taps, 'bugs', piercing or clamp connections, etc. within meter enclosure **are not permitted**.
- 2 Per NEC, junctions and/or connections to service entrance conductors between meter enclosure and service disconnect enclosure shall be limited to those under rules 230.46 and 230.82.
- 3 Appropriately rated, labeled, UL listed **Utility Accessible** AC disconnect required.
- 4 Alternative POC at double connector in meter enclosure
- 5 In the event connects are made on the supply side of service disconnect, AC disconnect shall be listed as suitable for service equipment and provide appropriate overcurrent protection.

A current version of this specification may be found at: <https://citizenelectric.com/safety-service/#requirements>